

Never seen, never before technology

## Intelligent Radiated & Conducted Immunity test system, RS /CS 2016

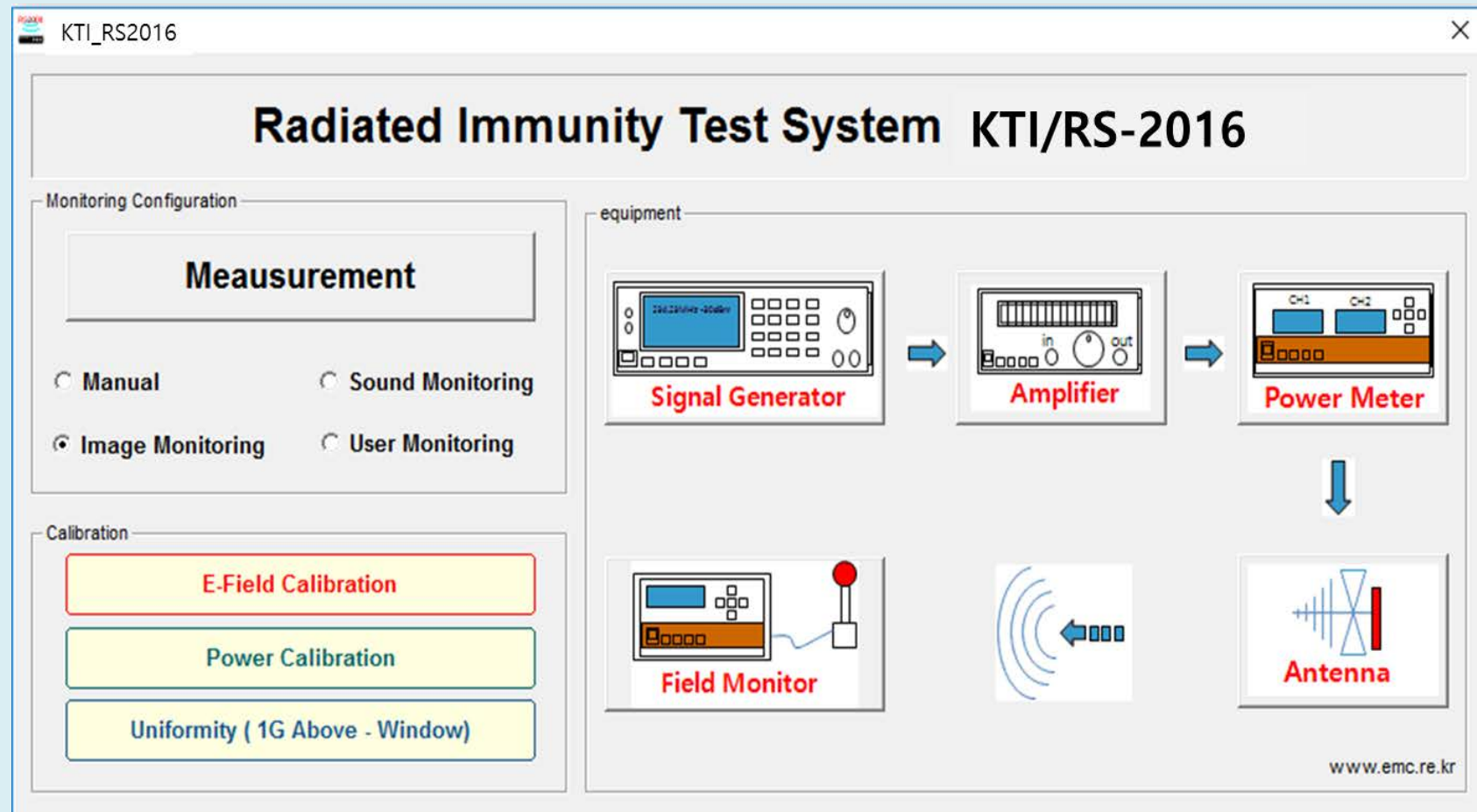
- Optical automatic monitoring under the RS,CS test Image, various electric parameter, RPM, BER,FER, audio spectrum and SPL
- Full automatic control 26MHz-40GHz, 1-200V/m
- Excellent expandable configurations with GPIB and RF switch
- Lowest uncertainty
- Automatic multi function monitoring without visually manual monitoring. Fully comply with IEC 60118-13, ETSI 301 mobile test
- Automatic reporting functions of the failed frequencies, level and image
- Adjustable the field strength and level on failed frequencies
- Debugging function in order to find the failed field strength
- BER,FER and Sound Pressure Level(SPL) measurements for mobile phone ,telephone set under the Radiated / Conducted immunity test

EMC engineering, ISO 17025 test lab. RF, EMC, Safety and Calibration since 1987

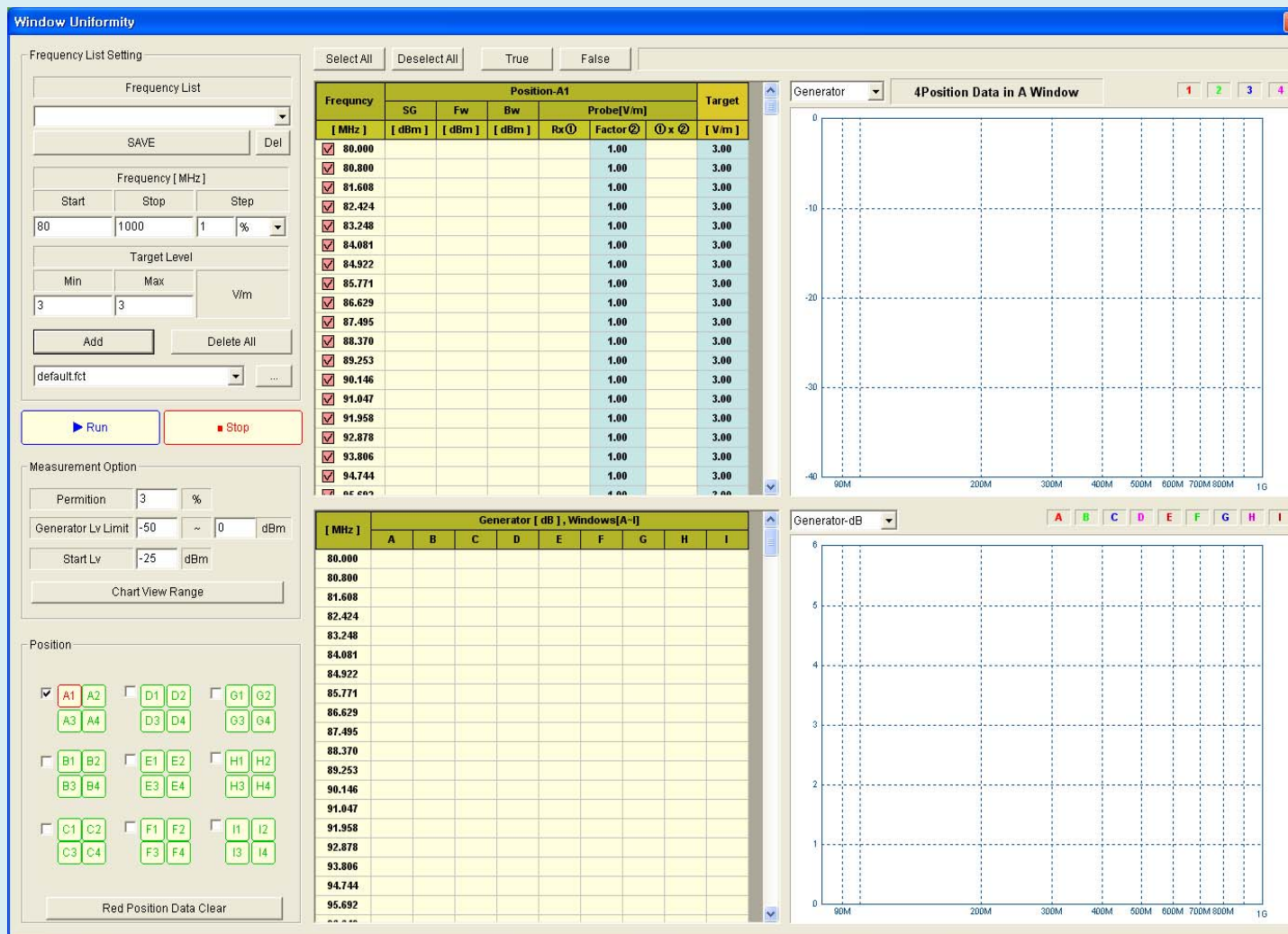


## 1. Intelligent Radiated & Conducted Immunity test system, RS&CS 2016

- Main menu



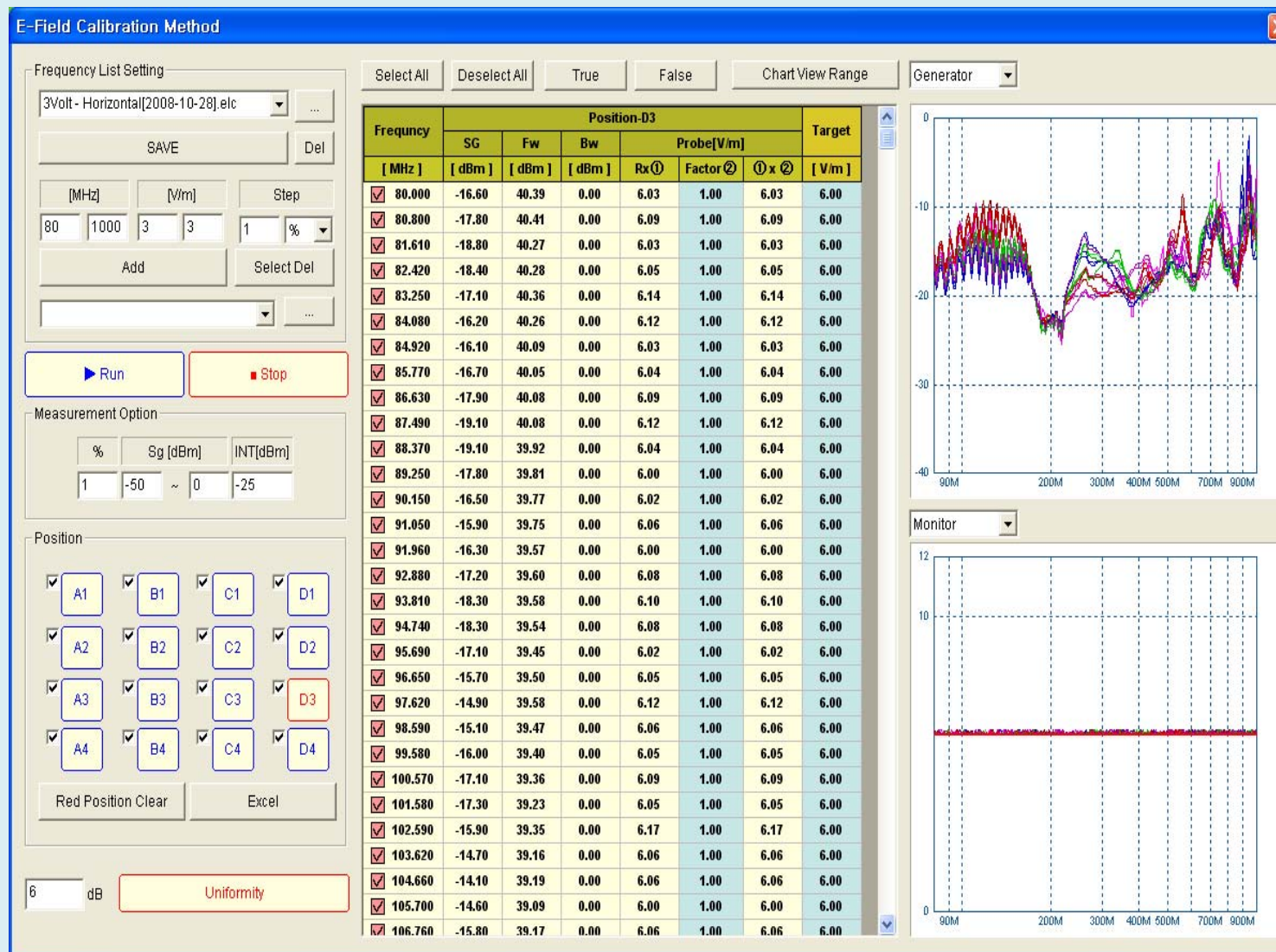
## 2. Uniformity measuring functions in accordance with 2016.2 new regulations for the 10 GHz higher band



Uniformity measuring functions in according to the new regulation, 2016.02



## Examples of the uniformity test report and data



### 3. Debug Mode

This function provided the end user convenience to find the failed electromagnetic field strength and frequencies after radiated or conducted immunity test.

**Debug Measurement**

Frequency Option

108.906 MHz

Sg Lv 0.1dBm

-28.20

Modulation

AM INT 1 kHz 80%

RF On

RF Off

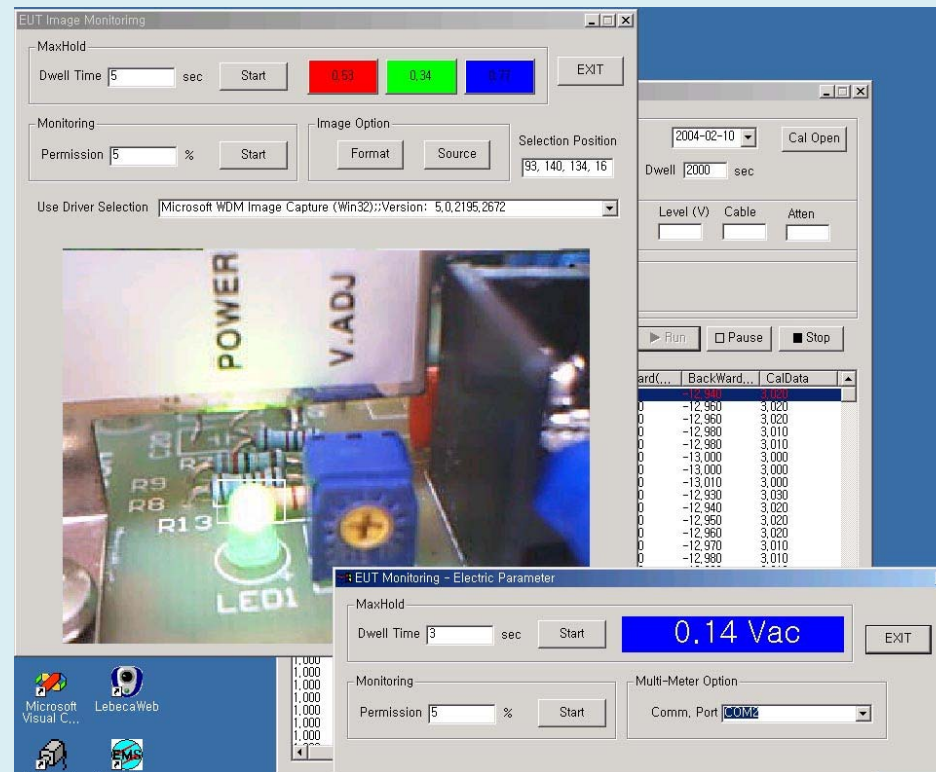
	108.906	SG [ dBm ]	Fw [ dBm ]	Bw [ dBm ]	Monitor
Calibration		-28.20	-24.10	-43.87	3.03
Debug		-28.20	-50.60	-63.02	
Monitoring	Not Monitoring				





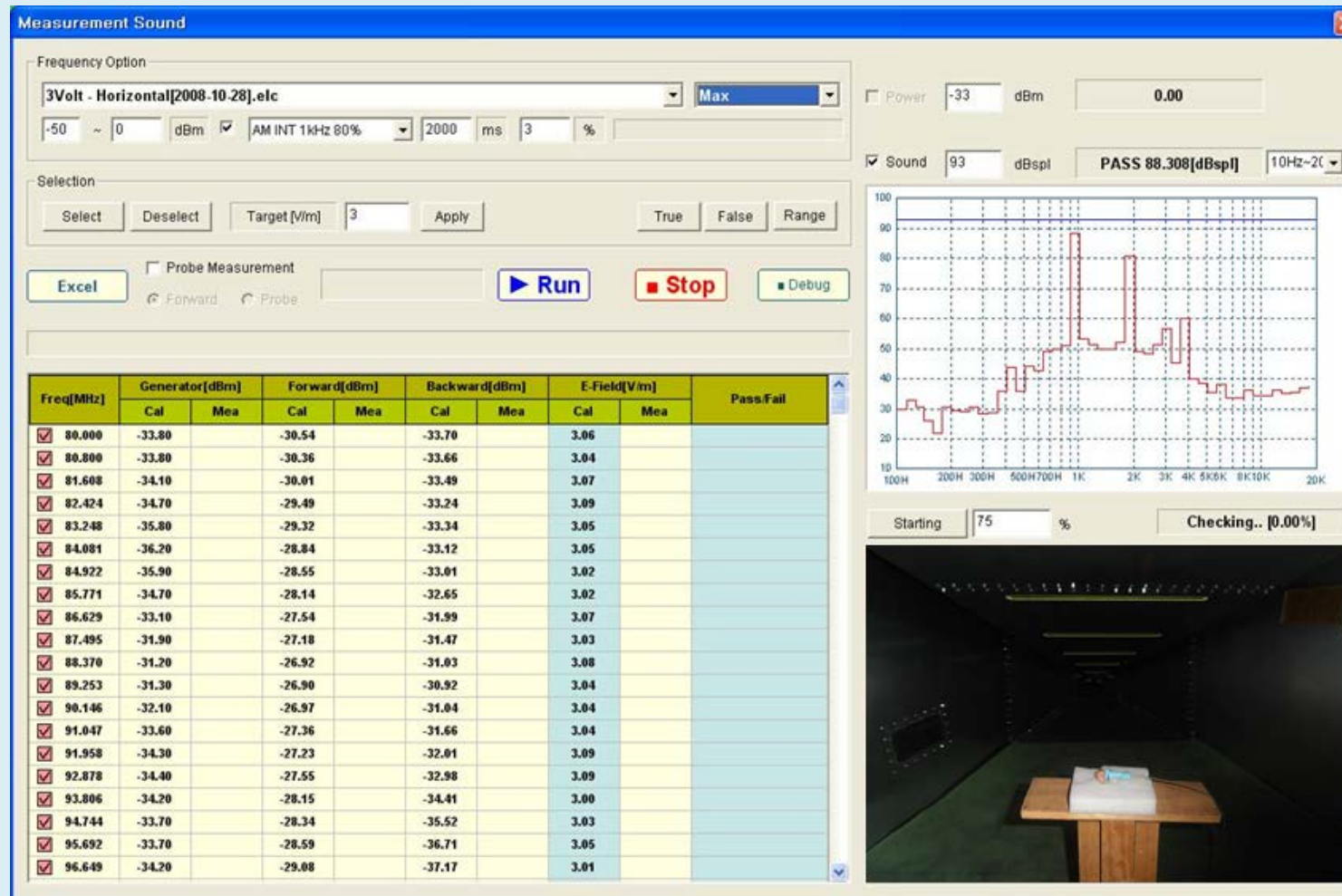
## 4. Multi monitoring, image and electric parameters on the screen

- Image degradation and various electric parameter of the EUT could be automatically monitored by KTI RS2016 S/W itself under the test.
- Each monitoring methods could be done at once and each frequencies..
- These automatic monitoring methods for RS and CS test are proposed by KTI at first in the world.
- These functions are very important to the immunity test in order to reduce the uncertainty.
- Image zone selection functions in order to reduce the uncertainty
- Statistical image treatment using an optimum color analyzing technology by KTI' unique techniques.



## 5. Power[dB<sub>m</sub>] comparison, sound[dB<sub>spl</sub>] level, and image monitoring[%] under the RS and CS test

- Examples of the IEC 60318-13 test report and data



## 5-1. Radiated, Conducted immunity test system





## 5-2. Radiated, Conducted immunity test system(IEC 60318-13)

- Fully meet the IEC 60118-13 hearing aids RS immunity test functions
- Input related interference level(**IRIL**) measuring function
- Overall input related interference level (**OIRIL**) measuring function
- Automatic audio processing function
- Audio calibrations.



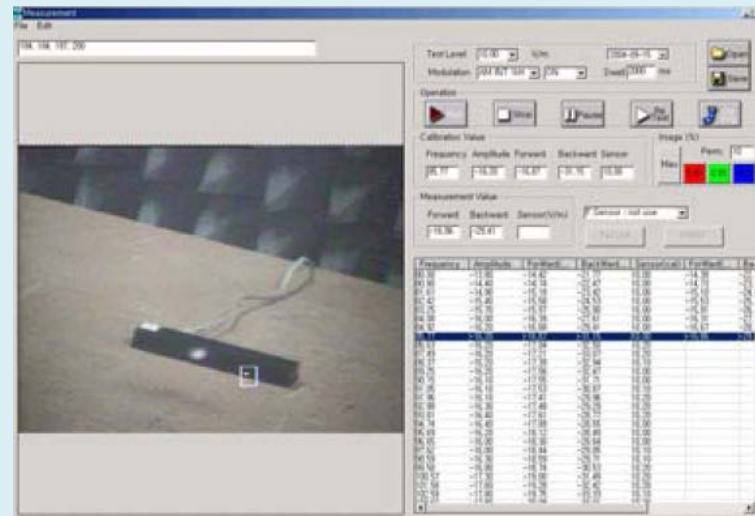
## 6. Optical Image monitoring

### *Full optical system*

- 200V/m up to 40GHz ,100 times zoom,
- Image, Pan/Tilt and auto focus.

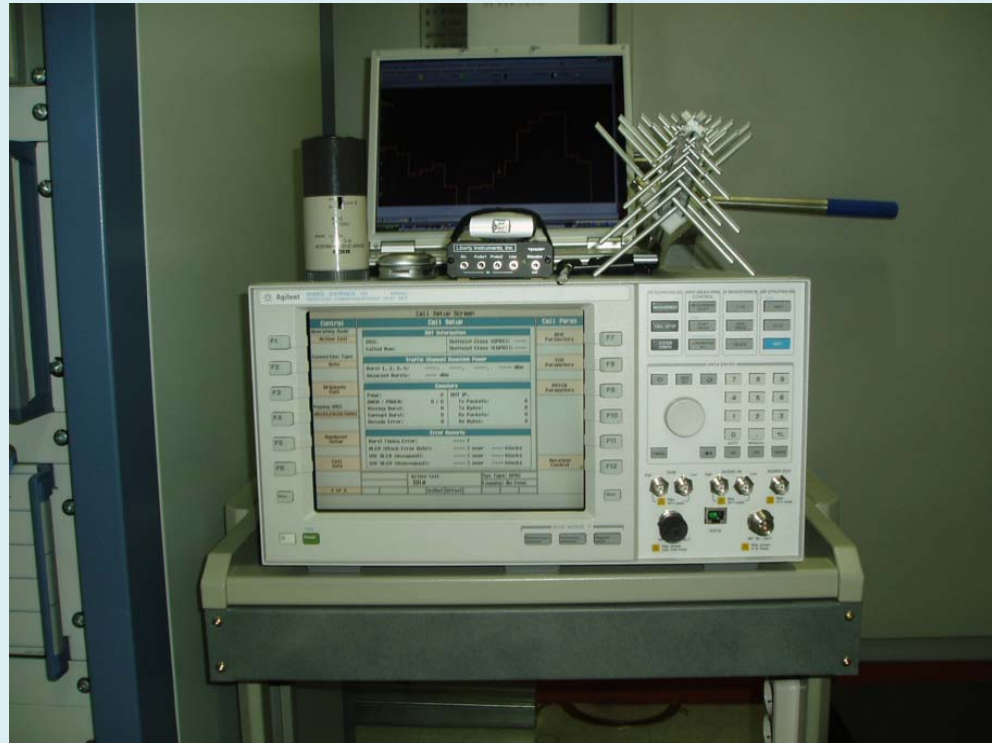
### *1 pair optic cable*

- Continuous image monitoring by the Analog density modulation.
- EMC engineer designed.
- Proven 200V/m radiated immunity by the Hyundai Motor.
- On screen display.



## 7. Mobile phone simulator control under the RS test

- Audio monitoring under the RS test
- BER,FER measurement under the RS test between mobile phone and call simulator.
- Fully compliance with IEC 61000-4-13 Amendment " Mobile phone RS test"
- Fully compliance with ETSI 301-489 series, RS test for mobile phone.
- Fixed tone and Pink tone measurement functions
- Radiated immunity test for GSM, DCS1800 and CDMA



The others all products of EUT monitoring under the RS test are available on the user demand.

